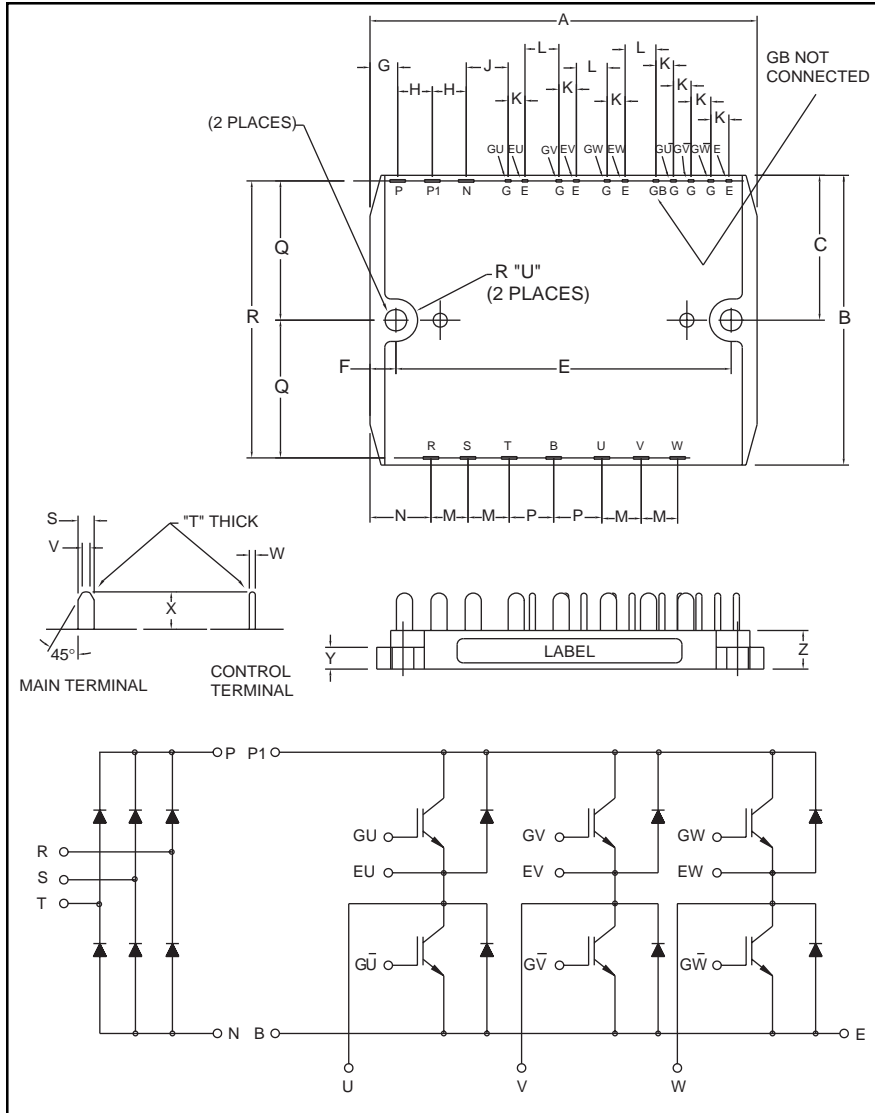


CI Module

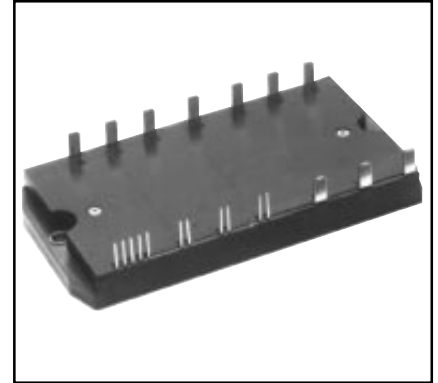
Three Phase Converter +
Three Phase Inverter
15 Amperes/1200 Volts



Outline Drawing and Circuit Diagram

Dimensions	Inches	Millimeters
A	4.53	115.0
B	2.36	60.0
C	1.18	30.0
D	0.18	4.5
E	4.13	105.0
F	0.20	5.0
G	0.31	8.0
H	0.59	15.0
J	0.68	17.2
K	0.10	2.54
L	0.40	10.16
M	0.49	12.5

Dimensions	Inches	Millimeters
N	0.51	13.0
P	0.59	15.0
Q	1.14	29.0
R	2.28	58.0
S	0.16	4.0
T	0.02	0.6
U	0.22	5.5
V	0.08	2.0
W	0.02	0.6
X	0.35	9.0
Y	0.25	6.3
Z	0.47	12.0



Description:

Powerex CI Modules are designed for use in switching applications. Each module consists of a three phase diode converter section and a three phase IGBT inverter section. All components and interconnects are isolated from the heat sinking baseplate, offering simplified system assembly and thermal management.

Features:

- Low Drive Power
- Low $V_{CE(sat)}$
- Discrete Super-Fast Recovery (70ns) Free-Wheel Diodes
- High Frequency Operation (20-25 kHz)
- Isolated Baseplate for Easy Heat Sinking

Applications:

- AC Motor Control
- Motion/Servo Control
- General Purpose Inverters
- Robotics

Ordering Information:

Example: Select the complete nine digit module part number you desire from the table below - i.e. CM15MD1-24H is a 1200V (V_{CES}), 15 Ampere CI Power Module.

Type	Current Rating Amperes	V_{CES} Volts (x 50)
CM	15	24

CM15MD1-24H

CI Module

Three Phase Converter + Three Phase Inverter

15 Amperes/1200 Volts

Absolute Maximum Ratings, $T_j = 25^\circ\text{C}$ unless otherwise specified

Characteristics	Symbol	CM15MD1-24H	Units
Power Device Junction Temperature	T_j	-40 to 150	$^\circ\text{C}$
Storage Temperature	T_{stg}	-40 to 125	$^\circ\text{C}$
Mounting Torque, M4 Mounting Screws	—	13	in-lb
Module Weight (Typical)	—	100	Grams
Isolation Voltage, AC 1 minute, 60Hz	V_{RMS}	2500	Volts

Converter Sector

Repetitive Peak Reverse Voltage	V_{RRM}	1600	Volts
Recommended AC Input Voltage	E_a	440	Volts
DC Output Current	I_o	15	Amperes
Surge (Non-repetitive) Forward Current	I_{FSM}	150	Amperes
I^2t for Fusing	I^2t	93	A^2s

IGBT Inverter Sector

Collector-Emitter Voltage (G-E Short)	V_{CES}	1200	Volts
Gate-Emitter Voltage (C-E Short)	V_{GES}	± 20	Volts
Collector Current	I_c	15	Amperes
Collector Current (Pulse)*	I_{CM}	30	Amperes
Emitter Current**	I_e	15	Amperes
Emitter Current** (Pulse)*	I_{EM}	30	Amperes
Maximum Collector Dissipation	P_c	66	Watts

Electrical and Mechanical Characteristics, $T_j = 25^\circ\text{C}$ unless otherwise specified

Characteristics	Symbol	Test Conditions	Min.	Typ.	Max.	Units
Converter Sector						
Repetitive Reverse Current	I_{RRM}	$V_R = V_{\text{RRM}}, T_j = 150^\circ\text{C}$	—	—	8	mA
Forward Voltage Drop	V_{FM}	$I_F = 15\text{A}$	—	—	1.5	Volts
Thermal Resistance (Junction-to-Fin)	$R_{\text{th(j-f)}}$	Per Diode	—	—	1.7	$^\circ\text{C/W}$
IGBT Inverter Sector						
Collector Cutoff Current	I_{CES}	$V_{\text{CE}} = V_{\text{CES}}, V_{\text{GE}} = 0\text{V}$	—	—	1	mA
Gate-Emitter Threshold Voltage	$V_{\text{GE(th)}}$	$V_{\text{CE}} = 10\text{V}, I_c = 1.5\text{mA}$	4.5	6.0	7.5	Volts
Gate-Emitter Cutoff Current	I_{GES}	$V_{\text{GE}} = V_{\text{GES}}, V_{\text{CE}} = 0\text{V}$	—	—	0.5	μA
Collector-Emitter Saturation Voltage	$V_{\text{CE(sat)}}$	$V_{\text{GE}} = 15\text{V}, I_c = 15\text{A}, T_j = 25^\circ\text{C}$	—	2.7	3.4	Volts
		$V_{\text{GE}} = 15\text{V}, I_c = 15\text{A}, T_j = 150^\circ\text{C}$	—	2.45	—	Volts
Input Capacitance	C_{ies}		—	—	3.0	nF
Output Capacitance	C_{oes}	$V_{\text{GE}} = 0\text{V}, V_{\text{CE}} = 10\text{V}$	—	—	2.4	nF
Reverse Transfer Capacitance	C_{res}		—	—	0.6	nF
Total Gate Charge	Q_G	$V_{\text{CC}} = 600\text{V}, I_c = 15\text{A}, V_{\text{GE}} = 15\text{V}$	—	75	—	nC
Resistive	Turn-on Time	$V_{\text{GE1}} = V_{\text{GE2}} = 15\text{V},$ $V_{\text{CC}} = 600\text{V}, I_c = 15\text{A},$ $R_g = 21\Omega,$	—	—	100	nS
	Rise Time		t_r	—	—	200
Switching	Turn-off Time	Resistive Load	—	—	150	nS
	Fall Time		t_f	—	—	350
Emitter-Collector Voltage	V_{EC}	$I_e = 15\text{A}, V_{\text{GE}} = 0\text{V}$	—	—	3.5	Volts
Reverse Recovery Time	t_{rr}	$I_e = 15\text{A}, V_{\text{GE}} = 0\text{V},$	—	—	250	nS
Reverse Recovery Charge	Q_{rr}	$di_e/dt = -30\text{A}/\mu\text{s}$	—	0.11	—	μC
Thermal Resistance (Junction-to-Fin)	$R_{\text{th(j-f)}}$	Per IGBT	—	—	1.9	$^\circ\text{C/W}$
		Per FWDi	—	—	2.4	$^\circ\text{C/W}$

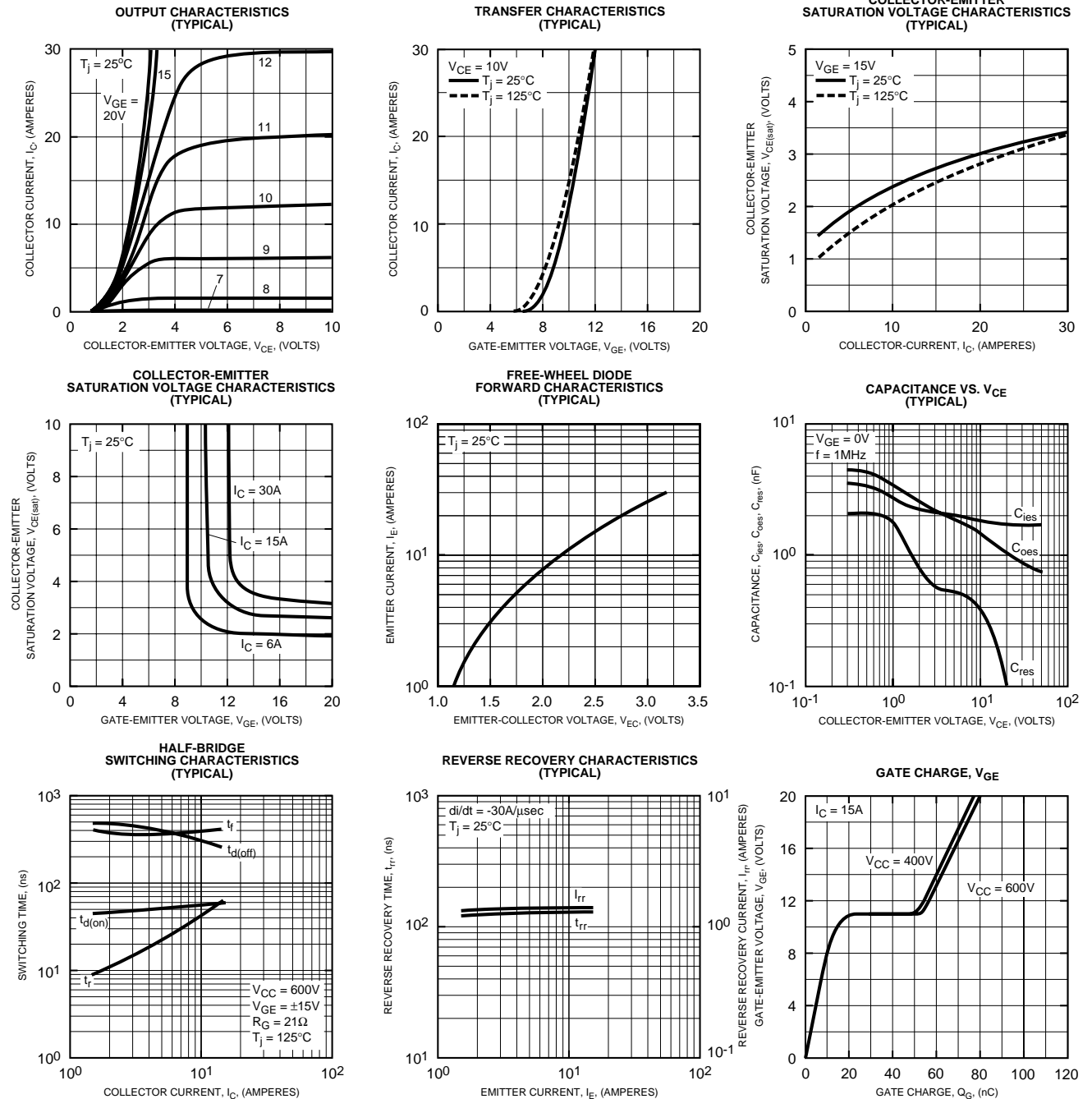
* Pulse width and repetition rate should be such that device junction temperature does not exceed maximum rating.

** Characteristics of the anti-parallel emitter-collector free-wheel diode.



Powerex, Inc., 200 Hillis Street, Youngwood, Pennsylvania 15697-1800 (724) 925-7272

CM15MD1-24H
CI Module
Three Phase Converter + Three Phase Inverter
15 Amperes/1200 Volts





Powerex, Inc., 200 Hillis Street, Youngwood, Pennsylvania 15697-1800 (724) 925-7272

CM15MD1-24H

CI Module

Three Phase Converter + Three Phase Inverter

15 Amperes/1200 Volts

