

Thyristor / Diode Modules / SEMiX

Thyristor / Diode Modules / SEMiX

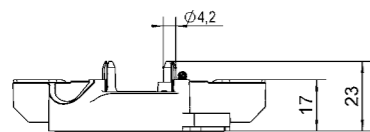
Type

Type	$V_{RRM} V_{DRM}$ V	$I_{FAV} I_{FAV} @ T_c$ A	T_c °C	$I_{FSM} I_{FSM} @ T_{jmax}$ A	$V_{T(TO)} @ T_{jmax}$ V	$r_T @ T_{jmax}$ mΩ	$R_{th(j-c)}$ per chip K/W	$R_{th(c-s)}$ K/W	T_j °C	Case	Circuit
SEMiX191KD16s	1600	190	85	5000	0.85	0.95	0.18	0.075	-40 ... +130	1s	
SEMiX302KD16s	1600	300	85	7500	0.85	1.1	0.091	0.045	-40 ... +130	2s	
SEMiX443KD16p ¹⁾	1600	585	85	7000	0.916	2.0	0.11	0.019	-40 ... +175	3lp	
SEMiX603KD16p ¹⁾	1600	732	85	9000	0.916	1.9	0.09	0.017	-40 ... +175	3lp	
SEMiX443KD22p ¹⁾	2200	580	85	8200	0.834	2.0	0.09	0.017	-40 ... +150	3lp	
SEMiX171KH16s	1600	170	85	4800	0.85	1.5	0.18	0.075	-40 ... +130	1s	
SEMiX302KH16s	1600	300	85	8000	0.85	1.1	0.091	0.045	-40 ... +130	2s	
SEMiX141KT16s	1600	140	85	3000	0.85	2.1	0.21	0.075	-40 ... +130	1s	
SEMiX302KT16s	1600	300	85	8000	0.85	1.7	0.091	0.045	-40 ... +130	2s	

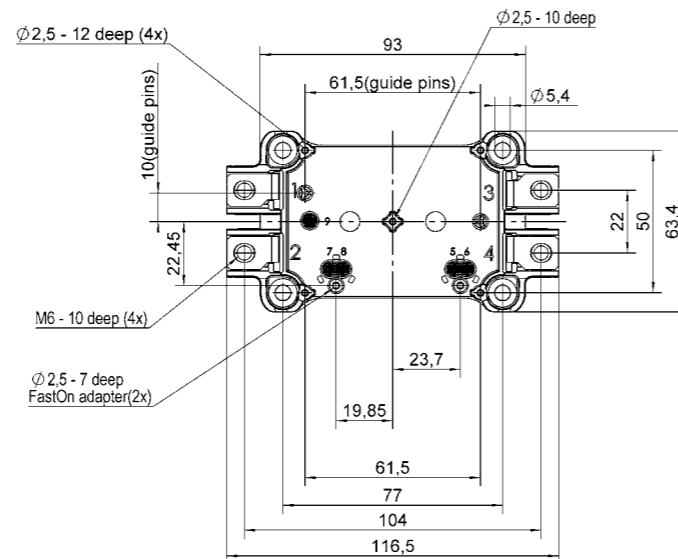
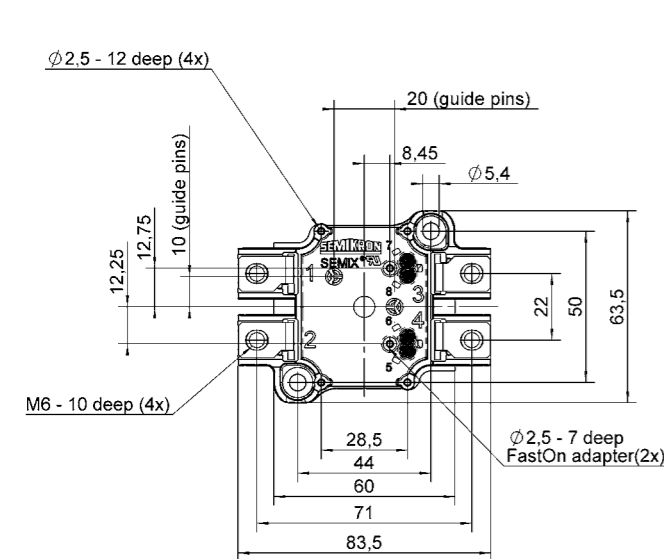
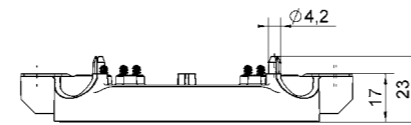
Footnotes: 1) Sample status

Cases

SEMiX 1s



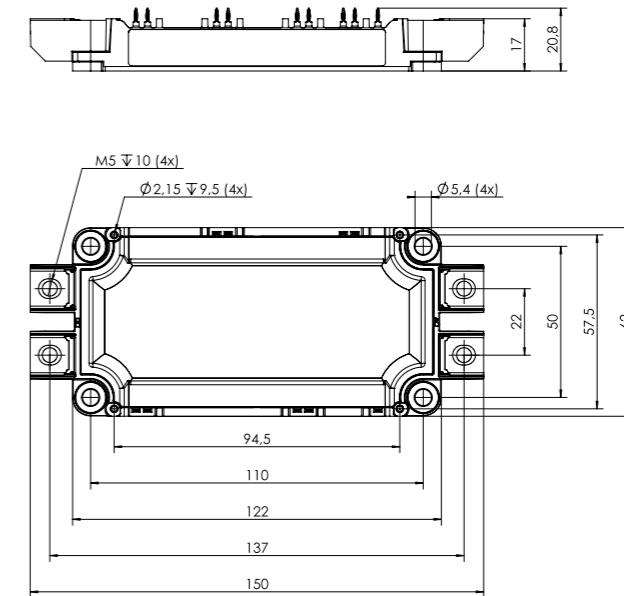
SEMiX 2s



Dimensions in mm

Cases

SEMiX 3lp



Dimensions in mm



ЭйБиЭн

Tel.: +375 17 310 44 44

Tel. +375 44 592 00 86
Tel. +375 33 366 51 85

<https://www.abn.by>
info@abn.by