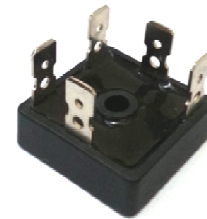
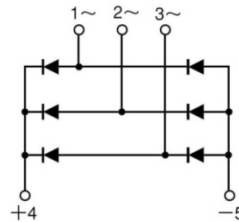


Three Phase Bridge Rectifier, 35A

Features

- Easy connections
- Surge capability up to 500A
- Low thermal resistance
- High thermal conductivity
- Electrically insulated case
- Center hole fixing

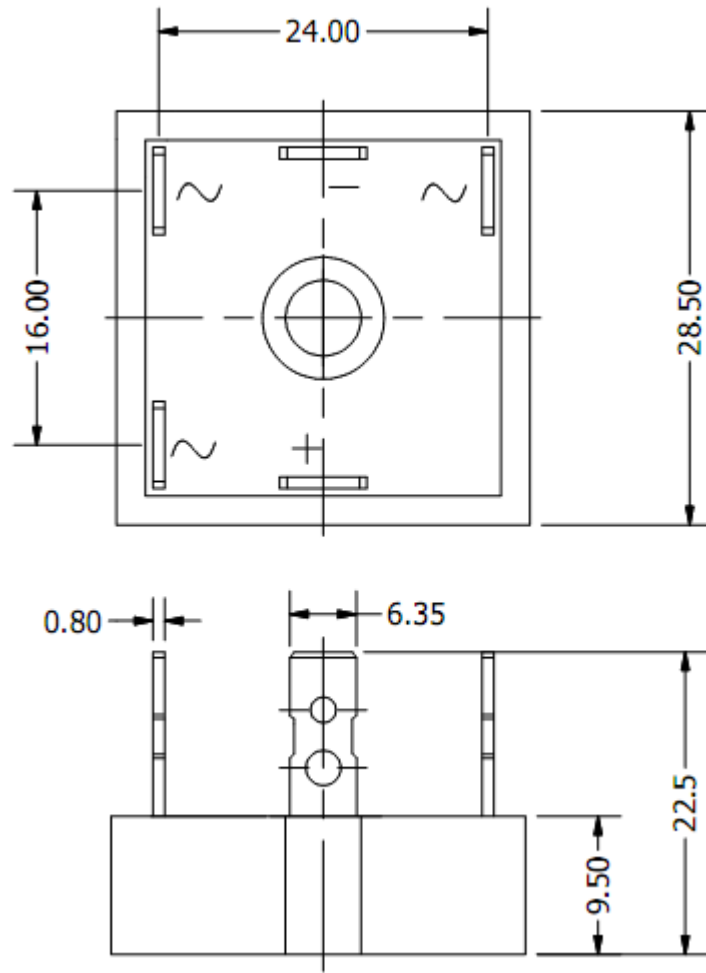


Voltage Ratings ($T_C = 25^\circ\text{C}$ unless otherwise noted)				
Type number	Voltage code	V_{RRM} , Max. repetitive peak reverse voltage (V)	V_{RSM} , Max. non-repetitive peak reverse voltage (V)	I_{RRM} max @ T_J max (mA)
36MT	80	800	900	2.0
	100	1000	1100	
	120	1200	1300	
	140	1400	1500	
	160	1600	1700	

Electrical Specifications ($T_C = 25^\circ\text{C}$ unless otherwise noted)				
Parameters	Conditions	Symbol	Values	Units
Maximum DC output current	$T_C = 60^\circ\text{C}$	I_D	35	A
Forward surge current (non-repetitive), one cycle	@ 50 Hz	I_{FSM}	475	A
Maximum forward voltage drop	$I_{FM} = 40\text{A}$, $T_J = 25^\circ\text{C}$	V_{FM}	1.19	V
RMS isolation voltage	$f = 50\text{Hz}$, $t = 1\text{ms}$, all terminals shorted	V_{ISO}	2500	V

Thermal and Mechanical Specifications ($T_C = 25^\circ\text{C}$ unless otherwise noted)				
Parameters		Symbol	Values	Units
Maximum operating junction temperature range		T_J	- 55 to + 150	$^\circ\text{C}$
Maximum storage temperature range		T_{STG}	- 55 to + 150	$^\circ\text{C}$
Junction to case		$R_{th(j-c)}$	0.9	$^\circ\text{C/W}$
Mounting torque $\pm 10\%$	Bridge to heatsink	F	2.0	Nm
Approximate weight		W	20	g

Package Outline



ALL DIMENSIONS IN MM

Ordering Table

36	MT	160
1	2	3

- 1 – Current Rating, $I_{F(AV)}$ (36 = 35A, Average)
- 2 – Three-Phase Bridge
- 3 – Voltage = code x 10 = V_{RRM}